



[Home](#) | 
 [Syndicate](#) | 
 [Site Map](#) | 
 [Disclaimer](#) | 
 [Contact Us](#)

Search

[Advanced Search](#)

## Categories

**Cisco (4)**  
     **CCNA (1)**  
     **CCNP (4)**  
     **CCIE (4)**  
     **HSRP (2)**  
     **Routing Information Protocol (RIP) (1)**  
**Exchange 2007 (17)**  
     **General (4)**  
     **Administration (5)**  
     **Migration and Deployment (6)**  
     **Power Shell (3)**  
     **High Availability (1)**  
     **Security (1)**  
**Windows 2003 (6)**  
     **Active Directory (4)**  
**Windows 2008 (3)**  
     **Active Directory (1)**  
**Internet Security and Acceleration Server (10)**  
     **Publishing (1)**  
     **Installation (4)**  
     **General (5)**  
**Windows XP (1)**  
**Windows 7 (1)**  
     **Installation (1)**  
**System Center Configuration Manager 2007 (14)**  
     **Installation (13)**  
     **Configuration (2)**  
**SQL Server 2008 (1)**  
**Exchange 2010 (1)**  
**VMware (1)**

## Site Menu

[View Blogs](#)  
[View Authors](#)  
[Become an Author](#)  
[Account Login](#)

## Article Options

[Email to Friend](#)  
[Print Article](#)  
[Add to Favorites](#)  
[Add to 'Articles to Read'](#)

## You Recently Viewed...

[Step by step guide installing SCCM 2007 Part 1](#)

## Popular Authors

[Huzaifah Ahmad](#)

## Popular Articles

[Step by Step Guide Installing ISA 2006 Enterprise Edition Part 1](#)

[Home](#) | 
 [Windows 2008](#) | 
 How to Install Windows Server 2008 R2 Step by Step

# How to Install Windows Server 2008 R2 Step by Step

By [Huzaifah Ahmad](#) | Published 12/19/2009 | [Windows 2008](#) | Unrated

## How to Install Windows Server 2008 Step by Step

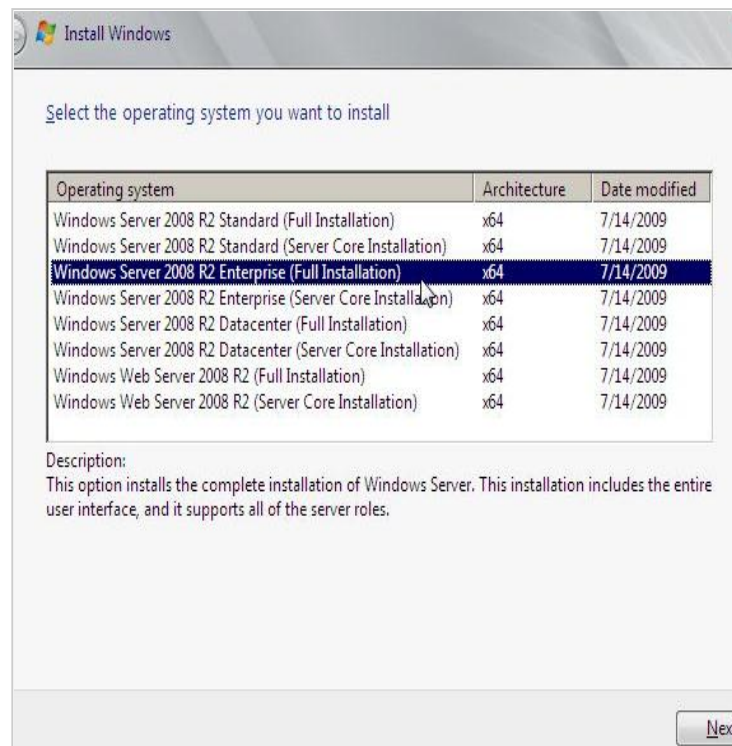
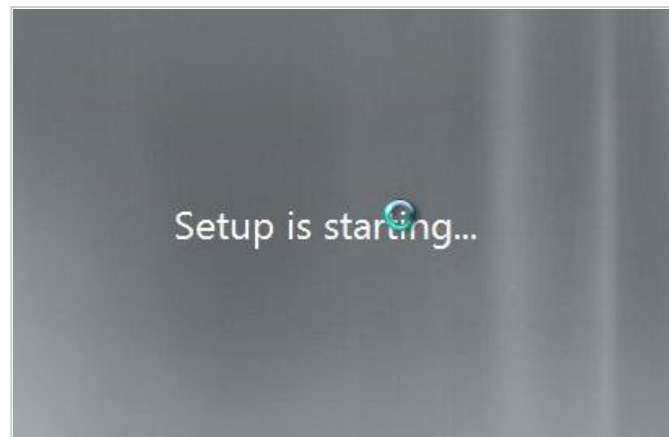
Windows Server 2008 R2 builds on the award-winning foundation of Windows Server 2008, expanding existing technology and adding new features to enable organizations to increase the reliability and flexibility of their server infrastructures. New virtualization tools, Web resources, management enhancements, and exciting Windows 7 integration help save time, reduce costs, and provide a platform for a dynamic and efficiently managed data center. Powerful tools such as Internet Information Services (IIS) version 7.5, updated Server Manager and Hyper-V platforms and Windows PowerShell version 2.0 combine to give customers greater control, increased efficiency, and the ability to react to front-line business needs faster than ever before.

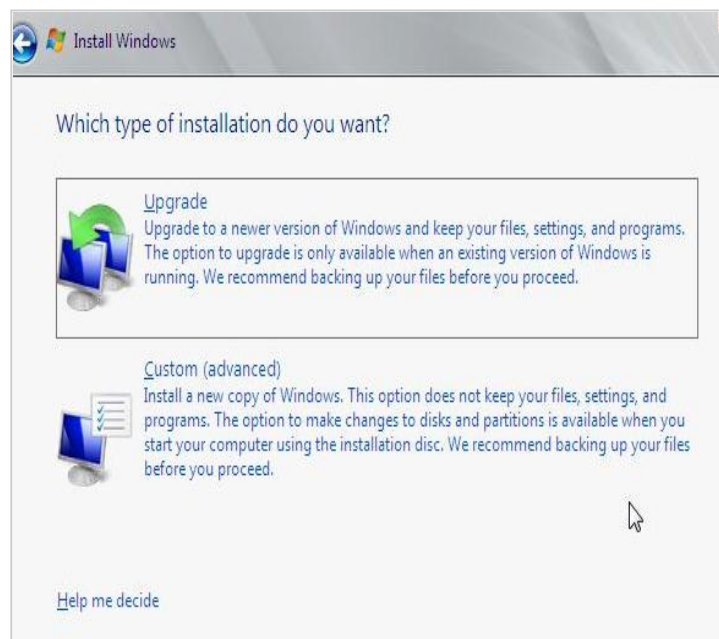
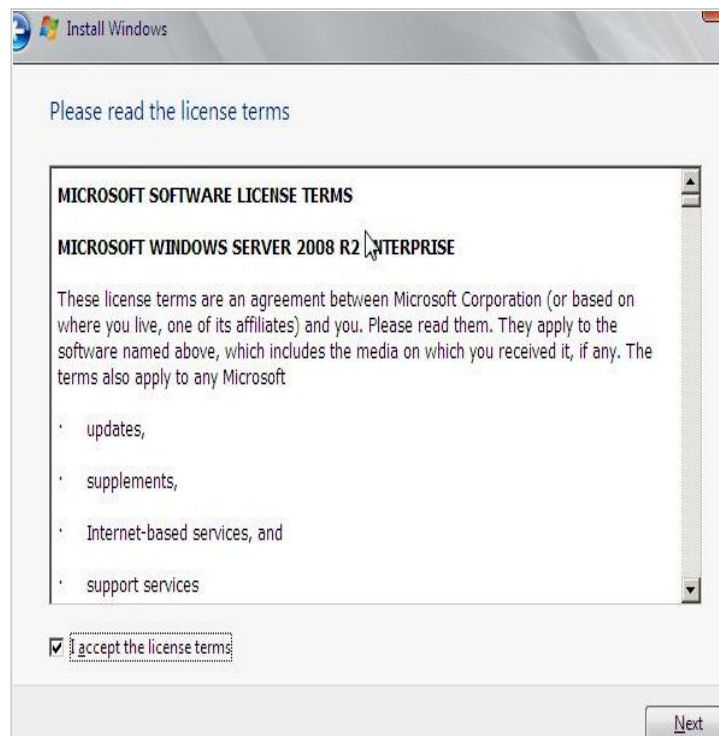
Let's take a quick look how we can install Windows 2008 R2 in a couple of minutes.

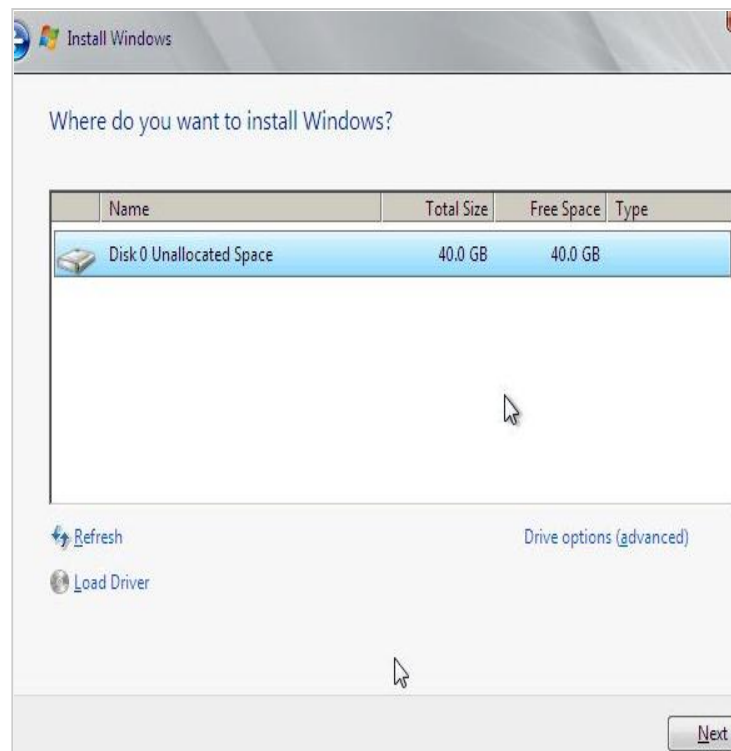
Component	Requirement
Processor	Minimum: 1.4 GHz (x64 processor) Note: An Intel Itanium 2 processor is required for Windows Server 2008 for Itanium-Based Systems
Memory	Minimum: 512 MB RAM Maximum: 8 GB (Foundation) or 32 GB (Standard) or 2 TB (Enterprise, Datacenter, and Itanium-Based Systems)
Disk Space Requirements	Minimum: 32 GB or greater Foundation: 10 GB or greater Note: Computers with more than 16 GB of RAM will require more disk space for paging, hibernation, and dump files
Display	Super VGA (800 × 600) or higher resolution monitor
Other	DVD Drive, Keyboard and Microsoft Mouse (or compatible pointing device), Internet access (fees may apply)

- [How to enable Network Load Balancing with ISA 2006 Enterprise Edition](#)
- [Step by Step Guide Installing ISA 2006 Enterprise Edition Part 4](#)
- [Step by Step Guide Installing ISA 2006 Enterprise Edition Part 2](#)
- [Step by Step Guide Installing ISA 2006 Enterprise Edition Part 3](#)
- [How to enable Intra-Array communication in ISA 2006 Enterprise Edition](#)
- [How to install Active Directory on Windows 2003](#)











[Make A Donation](#)

**Spread The Word**

- [del.icio.us it](#)
- [Digg this](#)
- [Furl](#)
- [Reddit](#)
- [Yahoo! this!](#)
- [StumbleUpon](#)
- [Google Bookmarks](#)
- [Live Favorites](#)
- [Technorati](#)

**Article Series**

This article is part 1 of a 2 part series. Other articles in this series are shown below:

1. [How to Install Windows Server 2008 R2 Step by Step](#)
2. [How to install Active Directory on Windows 2008](#)

**Related Articles**

[How to Install and Configure Windows Server 2008 DHCP Server](#)

**Comments**

No Comments Found.


How would you rate the quality of this article?

Rating: \* Poor Excellent

Your Name:

Your Email:

Your Comment: \*

Verification \* 

Please copy the characters from the image above into the text field below. Doing this helps us prevent automated submissions.

© Copyright 2011 IT Knowledgebase ahmedgroup.co.uk. All rights reserved.